

[View this email in your browser](#)

Issue #46

October 30, 2023



### In This Issue:

[Cisco News](#) • [Meraki Updates](#) • [Aruba Wi-Fi Sensors](#) • [CRN 500 List](#) • [Join Our Team](#)

## Cisco News



### IOS-XE Software Vulnerability

Cisco is providing an update for the ongoing investigation into observed exploitation of the web UI feature in Cisco IOS XE Software. This advisory provides enhanced detection for the presence of the implant. The investigation has determined that the actors exploited two previously unknown issues. The attacker first exploited CVE-2023-20198 to gain initial access and issued a privilege 15 command to create a local user and password combination. This allowed the user to log in with normal user access. The attacker then exploited another component of the web UI feature, leveraging the new local user to elevate privilege to *root* and write the implant to the file system. [\[Read More\]](#)



## Compute Hyperconverged with Nutanix

Cisco and Nutanix have forged a strategic partnership to simplify infrastructure and application delivery anywhere, at scale. A new solution, Cisco Compute Hyperconverged with Nutanix, is now generally available. What's different about this solution is that it combines the strength of Cisco's networking and SaaS-managed compute portfolio with hybrid multicloud software from Nutanix, based on its market-leading HCI foundation. The result is the industry's most complete hyperconverged solution, fully integrated and validated with flexible deployment options and support across Cisco UCS servers. [\[Read More\]](#)



## SD-WAN Magic Quadrant Leader

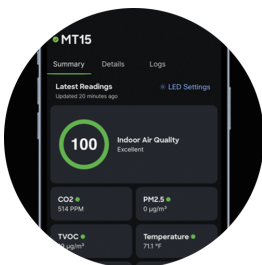
For the fourth year in a row, Gartner has positioned Cisco as a Leader for SD-WAN, based on their ability to execute and completeness of vision. Their offerings include Catalyst SD-WAN (formerly Viptela) and Meraki SD-WAN, separate SD-WAN appliances with additional advanced integrated security, licensed software, and the requisite management and orchestration. Over the next 18 months, Gartner expects Cisco will invest in its security dashboard, security service edge (SSE) third-party integrations in support of dual-vendor SASE, and enhanced cloud onramp for multicloud implementations. [\[Read More\]](#)

---

## Meraki Updates

### New Air Quality CO2 Sensor

MT15 is Cisco's highest performing air quality sensor, offering carbon dioxide monitoring for student and employee productivity. It features real CO2, TVOC, PM2.5, temperature, humidity, and ambient noise sensing; LED visual indicator to provide information about the air quality to the people in the room; and



flexible power options, including both a USB-C and PoE port on the device, which are positioned so that cables can be hidden. [[Read More](#)]



## Introducing Catalyst Meraki 9300

The Catalyst Meraki 9300 Network Switch unifies the world's most powerful switching hardware with the cloud simplicity of the Meraki experience, helping you unleash operational efficiency from day 0 to day n. With the true Meraki zero-touch provisioning experience you know and love, large-scale deployments can be completed in minutes, saving time and cost without a dedicated on-site IT staff. [[Read More](#)]

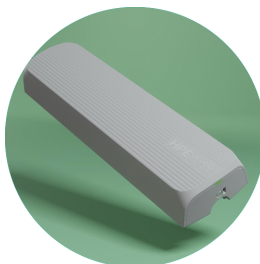


## Introducing Meraki MS130

In today's fast-paced world, the demand for high-speed connectivity is higher than ever. With the rise of Wi-Fi-first devices and bandwidth-hungry applications like video and voice, existing 1Gbps switches with Cat5E/6 cables could become a bottleneck for your Wi-Fi deployment. That's where the MS130 comes in. Designed for high-bandwidth Wi-Fi deployments, these purpose-built access layer switches offer multi-gigabit capacity, advanced security features, and intelligent power management. They allow you to upgrade your network without the need for costly cabling overhauls, ensuring a seamless experience for users. [[Read More](#)]

---

## Aruba Wi-Fi 6E Sensors



Aruba Networking has extended its innovation in the digital experience monitoring (DEM) space with the new User Experience Insight (UXI) Wi-Fi 6E Sensor, the first dedicated hardware sensor in the market that can monitor 6GHz Tri-Band 2.4/5/6 GHz. The UXI solution is comprised of dedicated hardware sensors, agents, and an AI-powered cloud hosted dashboard. The

sensors and agents act like end-users on the network and run synthetic tests to capture the network and application performance from an end-user's perspective. This performance analysis is displayed on a highly intuitive cloud-hosted dashboard.

[Tell me more](#)

---

## DSI Tech Makes CRN List



DSI Tech is proud to be recognized on CRN's "Solution Provider 500" list! This list recognizes the "top integrators, service providers, and IT consultants in North America by services revenue". DSI Tech is 133rd on the list and made the "Managed Service Provider Elite 100" list earlier this year, the "Solution Provider 500" list in 2022, and the "Tech Elite 250" list in 2020 & 2021, making this the fourth year in a row to earn an award.

[Read the Press Release](#)



## Join the DSI Tech Team

DSI Tech is committed to employee satisfaction through our benefits program and a friendly, team-based culture. We provide a positive environment for you to grow, learn, and excel as an industry professional. If you are looking for an exciting place to work that challenges your abilities and is financially solid and growing every year, then this is the place for you!

The DSI Tech team is growing! [Current job openings & career paths](#) include **Contracts & Proposals, Engineering, and Sales (Inside Reps and Outside**

Federal & SLED in various locations).

Join our team!

[Visit the Tech Topics Newsletter Archives Webpage](#)



DSI Tech provides complete IT solutions and services that are secure, innovative, energy efficient, and cost effective. Our customers include State & Local Government and Education (SLED), Federal agencies, and commercial companies. We hold nationwide contracts that are supported by a team of industry professionals and certified engineers. Learn more at [dsitech.com](https://dsitech.com).



Copyright © 2023 DSI Tech, All rights reserved.

