

[View this email in your browser](#)

Issue #17

May 27, 2021



In This Issue:

[Event: Hybrid Work Made Real](#) • [Creating a Hybrid Workplace](#) • [Wi-Fi Vulnerabilities](#) • [Join the DSI Team](#)

Hybrid Work. Made Real.

A Webex Special Event

Tuesday, June 8, 11:00 AM ET

[Register Now](#)

Work... it's not a place you go anymore, it's what you do. And it isn't just about choosing where to work. In a world that is moving quickly to a hybrid model, how can you unlock human potential?

Join Cisco as they unveil industry-first innovations that will address your most pressing concerns:

- How do you facilitate a safe return to the office?
- How do your IT teams meet the challenges of the new hybrid work model?
- How can you ensure your remote employees feel included and have an equal seat at the table?
- How do you enable employee well-being and remove fatigue wherever they work from?

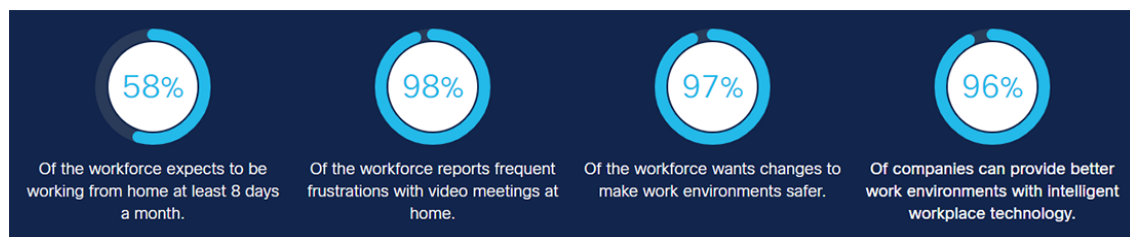
- How can you create delightful customer experiences in this digital world?
- How can you scale and secure all of it?

[\[Download FAQ\]](#)

Count me in!

Creating a Hybrid Workplace

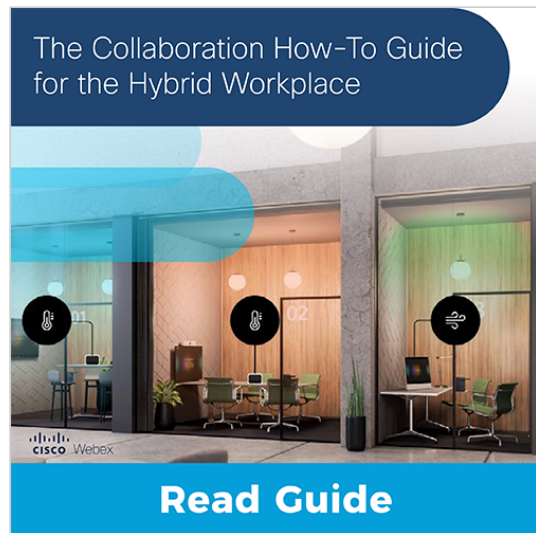
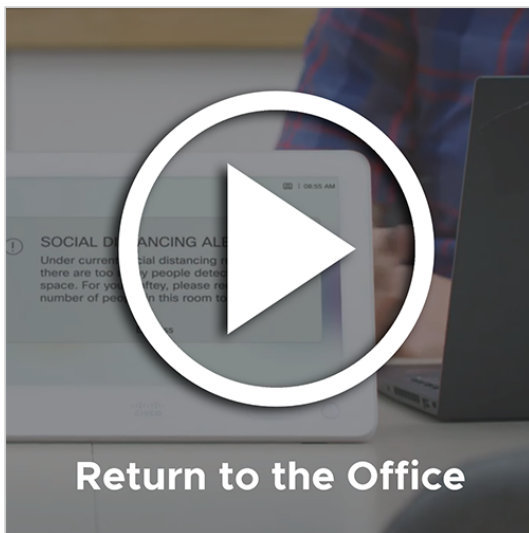
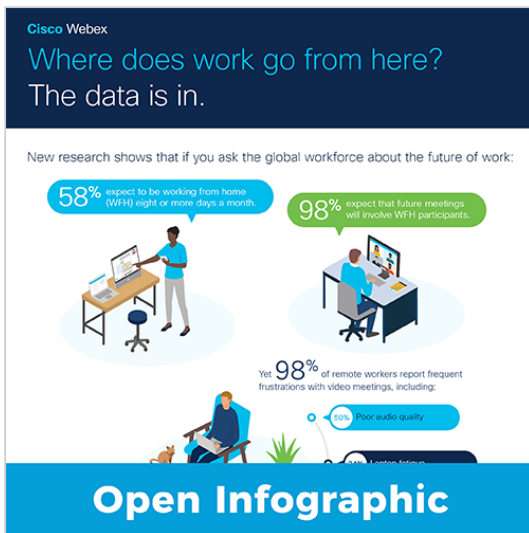
Today's workplaces were built for onsite office work only and are not designed for a hybrid workforce. Companies are planning their return to the office, but it won't look like it used to. They are distributing their workforce between remote, flexible, and in office workers, creating the Hybrid Workforce.



To be successful, companies must transform their workplace to:

1. Upgrade office workspaces
2. Create sustainable remote work experiences
3. Standardize on a single collaboration application for all employees
4. Provide IT with a single tool to manage it all

See different [workspace ideas](#), learn how to navigate the Hybrid Workplace with [this blueprint](#), and check out these other great resources:



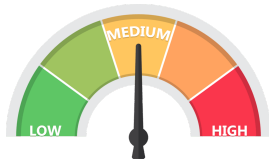
DSI can help! Reach out anytime for expert advice, demos, product quotes, and more:

Let's get started

Wi-Fi Vulnerabilities

Security researchers identified vulnerabilities in the frame aggregation functionality of some Wi-Fi devices. There is no evidence of the vulnerabilities being used against Wi-Fi users maliciously, and these issues are mitigated

through routine device updates that enable detection of suspect transmissions or improve adherence to recommended security implementation practices.



Read more about this security update:

[Blog Post](#) • [Cisco](#) • [ICASI](#) • [Wi-Fi Alliance](#)

Not sure what this means for you? We can help you figure out if you're affected and what to do next:

[Contact DSI](#)



Join the DSI Team

DSI is committed to employee satisfaction through our benefits program and a friendly, team-based culture. We provide a positive environment for you to grow, learn, and excel as an industry professional. If you are looking for an exciting place to work that challenges your abilities and is financially solid and growing every year, then this is the place for you!

The DSI team is growing! [Current job openings & career paths](#) include Accounting, Engineering, HR, and Sales (Federal & SLED in various locations).

[Join our team!](#)

[Visit the Tech Topics Newsletter Archives Webpage](#)



DSI provides complete IT solutions and services that are secure, innovative, energy efficient, and cost effective. Our customers include State & Local Government and Education (SLED), Federal agencies, and commercial companies. We hold nationwide contracts that are supported by a team of industry professionals and certified engineers. Learn more at dsitech.com.



Copyright © 2021 DISYS Solutions Inc. (DSI), All rights reserved.

Grow your business with  **mailchimp**